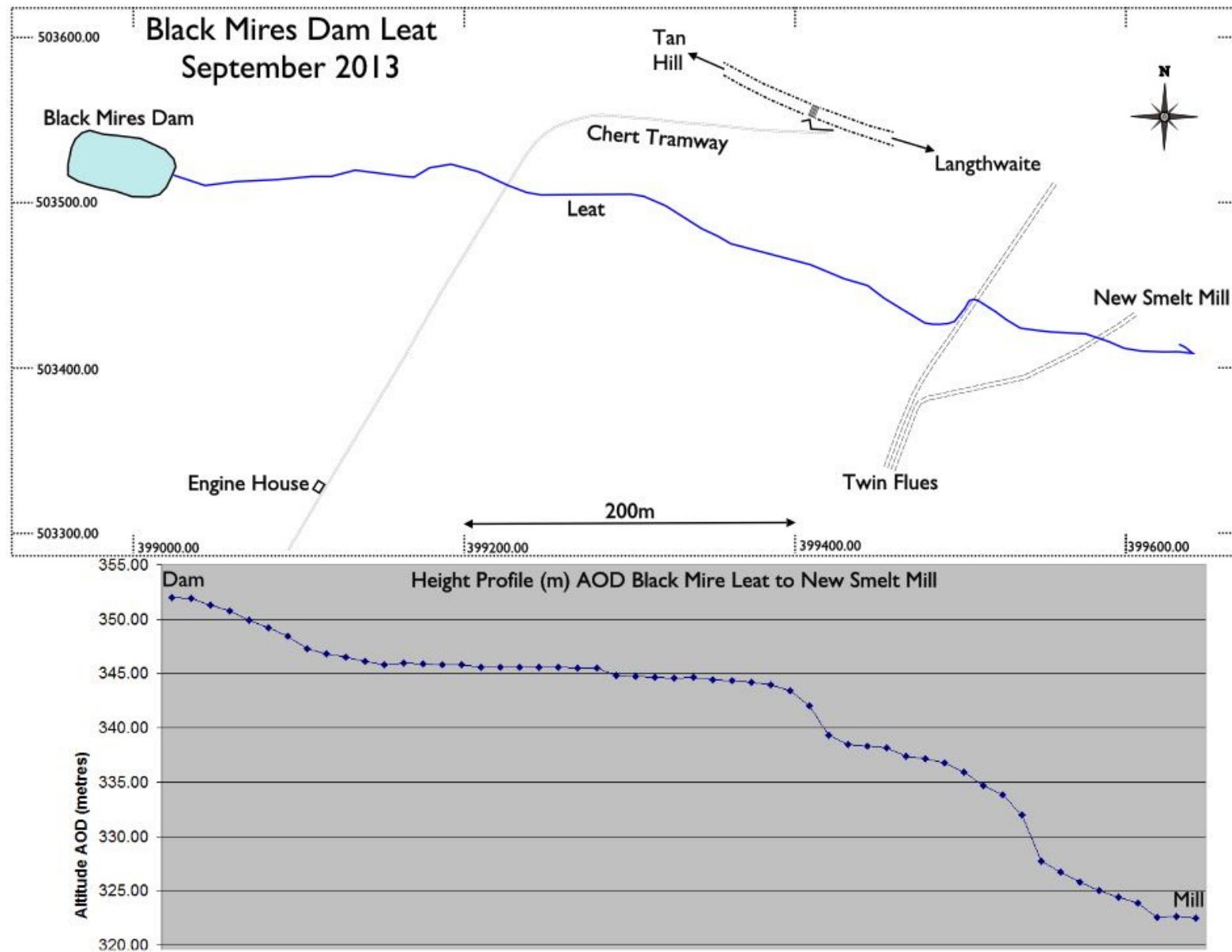


ProMark 120 Survey of Black Mire Leat September 2013 by Mike Walton and Stephen Eastmead, SWAAG.



GPS Processed Data

| Name | Description | East | North | Ortho height | Status | Constraints | Surv_Horz_Conf | Surv_Height_Conf | Type | Warning |
|--------|-------------|------------|------------|--------------|---------------------|----------------------------------|----------------|------------------|---------------|---------|
| BASE | base | 399409.715 | 503548.359 | 328.19 | Processed (stop&go) | Horizontal & Vertical Fixed (3D) | 0.264 | 0.204 | Control Point | No |
| 354 | | 399409.816 | 503548.173 | 328.528 | Estimated | No constraints | 173.241 | 98 | Logged Point | No |
| RICM | RICM | 417204.845 | 501971.274 | 226.37 | Processed (static) | No constraints | 0.056 | 0.047 | Logged Point | No |
| 0354~1 | BMD | 399009.993 | 503502.904 | 353.568 | Processed (stop&go) | No constraints | 0.074 | 0.053 | Logged Point | No |
| 0100~1 | BMD | 398999.549 | 503504.14 | 353.39 | Processed (stop&go) | No constraints | 0.074 | 0.052 | Logged Point | No |
| 0101~1 | BMD | 398989.647 | 503506.856 | 353.304 | Processed (stop&go) | No constraints | 0.074 | 0.052 | Logged Point | No |
| 0102~1 | BMD | 398979.042 | 503508.996 | 353.22 | Processed (stop&go) | No constraints | 0.076 | 0.051 | Logged Point | No |
| 0103~1 | BMD | 398966.901 | 503512.813 | 353.095 | Processed (stop&go) | No constraints | 0.076 | 0.052 | Logged Point | No |
| 0104~1 | BMD | 398960.985 | 503515.572 | 353.35 | Processed (stop&go) | No constraints | 0.078 | 0.053 | Logged Point | No |
| 0105~1 | BMD | 398961.129 | 503522.987 | 353.161 | Processed (stop&go) | No constraints | 0.079 | 0.053 | Logged Point | No |
| 0106~1 | BMD | 398963.556 | 503533.626 | 353.091 | Processed (stop&go) | No constraints | 0.079 | 0.052 | Logged Point | No |
| 0107~1 | BMD | 398965.33 | 503538.213 | 352.997 | Processed (stop&go) | No constraints | 0.079 | 0.052 | Logged Point | No |
| 0108~1 | BMD | 398969.17 | 503542.092 | 353.128 | Processed (stop&go) | No constraints | 0.078 | 0.051 | Logged Point | No |
| 0109~1 | BMD | 398974.497 | 503543.259 | 353.153 | Processed (stop&go) | No constraints | 0.08 | 0.052 | Logged Point | No |
| 0110~1 | BMD | 398982.597 | 503541.441 | 353.111 | Processed (stop&go) | No constraints | 0.08 | 0.052 | Logged Point | No |
| 0111~1 | BMD | 398990.64 | 503540.682 | 353.228 | Processed (stop&go) | No constraints | 0.08 | 0.05 | Logged Point | No |
| 0112~1 | BMD | 399005.195 | 503538.6 | 353.115 | Processed (stop&go) | No constraints | 0.081 | 0.051 | Logged Point | No |
| 0113~1 | BMD | 399019.267 | 503532.574 | 353.011 | Processed (stop&go) | No constraints | 0.082 | 0.051 | Logged Point | No |
| 0114~1 | BMD | 399024.718 | 503526.052 | 352.93 | Processed (stop&go) | No constraints | 0.081 | 0.049 | Logged Point | No |
| 0115~1 | BMD | 399026.209 | 503521.344 | 351.876 | Processed (stop&go) | No constraints | 2.345 | 1.25 | Logged Point | No |
| 0116~1 | BMD | 399023.741 | 503516.148 | 351.388 | Processed (stop&go) | No constraints | 0.204 | 0.12 | Logged Point | No |
| 0117~1 | BMD | 399020.804 | 503509.739 | 352.22 | Processed (stop&go) | No constraints | 4.595 | 1.054 | Logged Point | No |
| 0118~1 | BMD | 399016.399 | 503504.892 | 351.862 | Processed (stop&go) | No constraints | 0.09 | 0.046 | Logged Point | No |
| 0119~1 | BMD | 399009.161 | 503500.715 | 352.646 | Processed (stop&go) | No constraints | 0.091 | 0.046 | Logged Point | No |
| 0120~1 | Leat | 399025.734 | 503515.697 | 351.978 | Processed (stop&go) | No constraints | 0.091 | 0.046 | Logged Point | No |
| 0121~1 | Leat | 399043.276 | 503510.17 | 351.879 | Processed (stop&go) | No constraints | 0.359 | 0.485 | Logged Point | No |

| | | | | | | | | | | |
|--------|------|------------|------------|---------|---------------------|----------------|-------|-------|--------------|----|
| 0122~1 | Leat | 399061.911 | 503512.278 | 351.283 | Processed (stop&go) | No constraints | 0.373 | 0.502 | Logged Point | No |
| 0123~1 | Leat | 399086.934 | 503513.414 | 350.772 | Processed (stop&go) | No constraints | 0.376 | 0.501 | Logged Point | No |
| 0124~1 | Leat | 399108.25 | 503515.587 | 349.917 | Processed (stop&go) | No constraints | 0.378 | 0.501 | Logged Point | No |
| 0125~1 | Leat | 399119.64 | 503515.562 | 349.238 | Processed (stop&go) | No constraints | 0.369 | 0.483 | Logged Point | No |
| 0126~1 | Leat | 399133.72 | 503519.66 | 348.461 | Processed (stop&go) | No constraints | 0.382 | 0.5 | Logged Point | No |
| 0127~1 | Leat | 399164.33 | 503515.947 | 347.305 | Processed (stop&go) | No constraints | 0.094 | 0.043 | Logged Point | No |
| 0128~1 | Leat | 399170 | | | | | | | | |

| | | | | | | | | | | |
|-----|------|------------|------------|---------|---------------------|----------------|-------|-------|--------------|----|
| 154 | Leat | 399478.635 | 503427.268 | 344.328 | Processed (stop&go) | No constraints | 0.443 | 0.422 | Logged Point | No |
| 155 | Leat | 399483.722 | 503426.039 | 344.166 | Processed (stop&go) | No constraints | 0.443 | 0.422 | Logged Point | No |
| 156 | Leat | 399488.068 | 503426.655 | 343.917 | Processed (stop&go) | No constraints | 0.442 | 0.423 | Logged Point | No |
| 157 | Leat | 399492.345 | 503426.689 | 343.446 | Processed (stop&go) | No constraints | 0.44 | 0.374 | Logged Point | No |
| 158 | Leat | 399496.177 | 503428.034 | 341.988 | Processed (stop&go) | No constraints | 0.454 | 0.389 | Logged Point | No |
| 159 | Leat | 399502.925 | 503436.181 | 339.308 | Processed (stop&go) | No constraints | 0.191 | 0.193 | Logged Point | No |
| 160 | Leat | 399506.07 | 503440.324 | 338.493 | Processed (stop&go) | No constraints | 0.075 | 0.05 | Logged Point | No |
| 161 | Leat | 399507.484 | 503441.144 | 338.329 | Processed (stop&go) | No constraints | 0.071 | 0.051 | Logged Point | No |
| 162 | Leat | 399509.996 | 503441.019 | 338.144 | Processed (stop&go) | No constraints | 0.07 | 0.051 | Logged Point | No |
| 163 | Leat | 399515.219 | 503437.755 | 337.407 | Processed (stop&go) | No constraints | 0.069 | 0.05 | Logged Point | No |
| 164 | Leat | 399518.12 | 503436.641 | 337.161 | Processed (stop&go) | No constraints | 0.07 | 0.051 | Logged Point | No |
| 165 | Leat | 399520.576 | 503434.644 | 336.767 | Processed (stop&go) | No constraints | 0.07 | 0.052 | Logged Point | No |
| 166 | Leat | 399527.966 | 503429.19 | 335.944 | Processed (stop&go) | No constraints | 0.069 | 0.05 | Logged Point | No |
| 167 | Leat | 399536.783 | 503424.74 | 334.671 | Processed (stop&go) | No constraints | 0.07 | 0.052 | Logged Point | No |
| 168 | Leat | 399547.371 | 503422.203 | 333.808 | Processed (stop&go) | No constraints | 0.07 | 0.051 | Logged Point | No |
| 169 | Leat | 399556.094 | 503421.886 | 331.982 | Processed (stop&go) | No constraints | 0.167 | 0.119 | Logged Point | No |
| 170 | Leat | 399575.97 | 503420.646 | 327.737 | Processed (stop&go) | No constraints | 1.101 | 0.874 | Logged Point | No |
| 171 | Leat | 399589.784 | 503415.894 | 326.706 | Processed (stop&go) | No constraints | 0.165 | 0.118 | Logged Point | No |
| 172 | Leat | 399599.153 | 503411.81 | 325.807 | Processed (stop&go) | No constraints | 0.167 | 0.119 | Logged Point | No |
| 173 | Leat | 399609.995 | 503410.147 | 324.992 | Processed (stop&go) | No constraints | 0.166 | 0.119 | Logged Point | No |
| 174 | Leat | 399622.796 | 503409.853 | 324.4 | Processed (stop&go) | No constraints | 0.166 | 0.119 | Logged Point | No |
| 175 | Leat | 399631.53 | 503409.864 | 323.85 | Processed (stop&go) | No constraints | 0.165 | 0.12 | Logged Point | No |
| 176 | Leat | 399639.858 | 503409.034 | 322.537 | Processed (stop&go) | No constraints | 0.165 | 0.118 | Logged Point | No |
| 177 | Leat | 399635.585 | 503412.362 | 322.584 | Processed (stop&go) | No constraints | 0.166 | 0.119 | Logged Point | No |
| 178 | Leat | 399632.136 | 503414.23 | 322.488 | Processed (stop&go) | No constraints | 0.165 | 0.119 | Logged Point | No |